



*. . . to keep it running®*



*You know your equipment . . .  
now we would like you to know about  
the world's most technologically advanced lubricants.*

**Southwestern Petroleum Lubricants, LLC**

# LUBRICANTS

## You know your equipment . . . Now we'd like you to know about SWEPCO Lubricants

That faint bearing squeal . . . the one that's so high pitched most people don't even notice . . . that barely detectable sponginess you can feel in your hydraulics . . . that annoying vibration or chatter that hasn't been there before . . . that hot gear box smell. No one knows your equipment better than you. Your senses are keen. And you trust them. You trust them because they tell you about the equipment you rely upon to keep your operation going.

Unfortunately when your senses detect these events, they also tell you dollars and cents are going down the drain. That faint squeal isn't just a noise. It's metal to metal contact . . . and that sponginess, that vibration, that chatter and that smell. It's more money that's about to be spent.

Because they have always been there, many equipment owners accept these as the facts of equipment life. But it doesn't have to be that way. New lubricant technologies, pushed to the very cutting

***. . . nothing sounds quite as sweet  
as a well oiled operation.***



edge by Southwestern Petroleum, can change your expectations and even the way you think . . . about lubricants . . . about maintenance and repair costs . . . about productivity . . . about reliability . . . about the overall cost effectiveness of all of the areas influenced by your choice of lubricants and lubricants suppliers.

But one thing hasn't changed . . . and never will. There is nothing, absolutely nothing, as sweet as the sound of a well oiled operation. Let your SWEPCO Field Service Representative introduce you to the world's most technologically

advanced lubricants . . . the only way you can lose is by continuing to lubricate your equipment with conventional lubricant technology.

Experience the many benefits of SWEPCO Lubrication . . .

- expert technical support
- extended service intervals
- longer equipment life
- less service & repair downtime
- reduced hard part replacements
- reduced used lubricant disposal costs
- lower energy consumption
- inventory consolidation

Regardless of your lubrication challenges, SWEPCO delivers.



## Greases – Universal

### 121 Tri-Plex Universal Grease

- Unexcelled application range without compromises in performance
- Eliminates the need to stock multiple greases
- Superior high heat and shock protection
- Excellent low temperature pumpability
- Won't wash or spray off
- Wide temperature range (-30° to 450°F intermittent)

Unexcelled versatility. For superior lubrication of all types of bearings, bushings and other grease points. The “one grease for superior lubrication” ... a new generation multi-service grease which provides superior resistance to heat, shock, water, cold and extreme pressure in a wide range of applications. Makes bearings run longer, cooler, smoother, quieter, more efficiently. Increases bearing life and equipment reliability. Advanced proprietary chemistry produces superior working stability, dropping point, shock and water resistance. Exceeds NLGI GC-LB performance.



### 123 Ultra EP Multi-Service Grease

- Dropping point over 580°F (300°C)
- 500 kg 4-Ball Weld Load rating
- Superior extreme pressure performance
- USDA/NSF H2 compliant

Advanced overbased complex calcium sulfonate gelling chemistry yields superior mechanical stability, an inherently high dropping point, reduced wear and excellent resistance to water and corrosion. Exceptional performance for heavily loaded bearings in steel, construction, mining, paper, plastic, glass, brick, ceramics and many other industrial applications.

### 150 Superior Wire Rope Grease

- Exceptional EP performance
- Does not build up or harden like asphalt
- Multiple applications



A Calcium Sulfonate “0” grade grease designed for all types of wire ropes. Provides superior corrosion, wear and extreme pressure protection over a wide temperature range. Will not wash off and is ideal for use in corrosive, dusty, wet or abrasive environments. Is easy to apply and penetrates wire rope easily. Can be used over asphalt type lay lubes and coatings.

### 165 Moly XP Universal Extreme Pressure Grease

- Contains Moly XP and Lubium II
- Recommended for all types of bearings and equipment
- Excellent corrosion protection
- Compatible with all commonly used seal materials

A high performance calcium sulfonate based grease designed for use in a variety of bearings. Helps resist corrosion and resistant to washout. Also recommended for pipe threads, gaskets, couplings and other areas where lubrication and corrosion resistance are needed.

## Greases – High Temperature

### 101 Moly Grease

- Moly reduces friction & heat, extends bearing life
- Non-melt for high heat applications
- Excellent low temperature performance
- Water and corrosion resistant
- USDA/NSFH2 compliant

Unexcelled anti-friction and anti-wear performance. Metal plating protection of “technical fine” grade of Molybdenum Disulfide. Withstands 500,000 PSI for ultimate protection. Non-melt. For high temperatures and heavy loads, such as kiln car bearings and ovens; conventional and severe service applications, including roller, sleeve, pillow block bearings, CV joints, ball joints and slideways. Contains LUBIUM®. Buttery texture, excellent water resistance.



### 102 Organic Moly Grease

- Contains Moly XP to reduce heat and wear
- Non-melt high temperature performance
- Resists water and corrosion

Provides the performance of 101 Moly Grease without the dark color. Ideal for use in Brick Kilns, Concrete Manufacturing and Drying Ovens. Provides excellent protection over a wide temperature range.

### 104 High Heat Grease

- Excellent thermal and chemical stability
- Multi-purpose, non-melt formulation
- USDA/NSFH2 compliant

Excellent general purpose high heat grease where extra benefits of moly are not required. Sleeve bearings, gear bearings, conveyor bearings. Non-melt grease with a buttery texture, outstanding water resistance.

### 130 Polyurea Grease

- Unique high-speed bearing grease
- Wide operating temperature range
- CV-joints, U-joints, wheel bearings, chassis, and other automotive applications
- Excellent water resistance

An ash-less Polyurea thicken grease for a wide variety of high speed and temperature applications. SWEPCO 130 softens under shear to reduce drag and lower operating temperatures. Can be used to consolidate grease inventory.

# GREASES

## Greases – Open Gear

### 164 Ultra EP Open Gear Lube

- Superior EP protection for heavily loaded gears
- Strong adhesion characteristics and 580°F (300°C) dropping point reduce waste
- Outstanding water and corrosion resistance



State of the art overbased complex calcium sulfonate chemistry delivers superior EP, water and corrosion protection for demanding open and outside gears. Highly recommended for

ring gears, swing gears, draglines, chain and sprocket drives, wind gears, rock crushers, hoists and other open or outside gearing. Also suitable for fifth wheel lubricant.

## Greases – High Shock

### 103 Moly HI Plus Grease

- Exceptional impact, water & corrosion resistance
- Moly reduces friction, heat and wear
- High temperature performance (up to 375°F)
- USDA/NSF H2 compliant

For extreme shock as on front end loaders, dump beds, pile drivers, shaker screens and industrial machinery. Dusty or acidic conditions or where water washout is a problem. Excellent performance up to 375°F (190°C). Tough, fibrous grease with outstanding adhesive qualities; forms “dust seal” to keep dirt and grit out of bearings. Contains Molybdenum Disulfide.

### 105 HI Plus Grease

- Exceptional impact resistance
- Superior water resistance
- Highly resistant to acidic conditions
- USDA/NSF H2 compliant



Delivers the benefits of 103 Moly HI Plus Grease without Moly. High impact use such as on front end loaders, dump beds, pile drivers, shaker screens and industrial machinery.

### 110 Shock Resistant Grease

- Excellent all-temperature shock resistance
- Resists water washout and corrosion
- Versatile multi-purpose formulation
- USDA/NSF H2 compliant

Cost-cutting shock resistance, with excellent EP performance. Use where shock resistance is needed but less severe water and acidic conditions are expected. Adhesive, “tacky” but pumpable. Dependable, low temperature lubrication to -25°F (-32°C).

## Greases – Semi-Fluid

### 113 Moly Fluid Grease

- Excellent all-temperature performance
- Superior resistance to water washout
- Moly reduces friction and heat
- Clings and penetrates to reduce wear

Contains high performance EP additives and Molybdenum Disulfide. Excellent water resistance. Use in forced feed lubricators, centralized greasing systems or where leaky gear boxes can no longer hold gear oil.

## Greases – H1 Food Machinery

### 115 Food Machinery Grease

- USDA/NSF H1 compliant (incidental food contact)
- Resists water washout, pounding out or slinging out
- Excellent pumpability
- Outstanding high temperature, acid & corrosion resistance



Exceeds requirements for incidental contact in food and beverage plants. Use for high speed can seamers, filling equipment, peelers, juice extractors, labelers. Outstanding for centralized lubricant systems. An adhesive white grease

with excellent resistance to acidic conditions and water washout. Has a high dropping point of 450°F (232°C).

### 116 Ultra EP Food Machinery Grease

- Excellent load carrying capacity and anti-wear properties
- Superior corrosion and water resistance
- Can be used throughout the plant and on agricultural equipment
- Works where other food grade greases fall short
- Pumps below -10°F (-23°C)

A Calcium Sulfonate based grease with NSF H-1 approval and ISO 21469 certification. Is durable enough to be used above and below the line, can be used in pellet mills, grinders, fork lifts, conveyors and other processing equipment.

## Gear Lubricants

### 201 Multi-Purpose Gear Lube

- Reduces operating temperatures
- Adhesive/cohesive formulation
- Meets all AGMA specifications
- EP and limited slip differential additives
- USDA/NSF H2 compliant

Excellent multi-purpose gear oil for use where extra load carrying capacity of Molybdenum Disulfide and multi-grade versatility is not required. Use in industrial gearboxes, differentials, axles (including limited-slip) and final drives that require high EP protection. Exceeds AGMA service requirements, MIL-PRF-2105E and Mack GO-H. Adhesive/cohesive characteristics eliminate dry starts, reduces gear box operating temperatures.



### 202 Moly XP 75W90 Synthetic Gear Lube

- *Syntheon™* synthetic base stock blend insures proper viscosity over a wide temperature range
- Advanced Moly XP additive reduces friction and heat
- Improved low temperature performance
- High temperature stability and extreme pressure protection
- Meets all AGMA specifications
- USDA/NSF H2 compliant
- Reduced fuel/energy consumption



Extended life, all weather protection for over-the-road truck and automobile manual transmissions, transaxles and differentials requiring SAE 75W90 service. Insures full film lubrication without channeling in cold weather start up conditions. *Syntheon™* synthetic base stock blend & Lubium® II insure proper viscosity over a wide temperature range. Moly XP plates gears to protect against friction & wear. Improves fuel economy in over-the-road service. Controls foaming; lowers operating temperatures. Extends oil life as much as two to three times or more. Controls deposits, varnish, corrosion, sludge, rust. Exceeds performance requirements of Mack Trucks, Ford, Chrysler, GM, Porsche and all other OEM 75W90 specifications.

### 203 Moly XP Gear Lube

- Maximum protection in extreme service operations
- Advanced Moly XP additive reduces friction and heat
- High temperature stability and oxidation control
- Meets all AGMA specifications
- USDA/NSF H2 compliant

Heavy duty adhesive/cohesive gear oil. Use where extra anti-wear, anti-friction protection of moly is needed but multi-grade versatility is not. Exceeds AGMA performance requirements, MIL-PRF-2105E and Mack GO-H. Contains suspension-grade Moly.

### 204 All Temperature Synthetic Gearbox Lube

- Formulated for industrial gearboxes
- Smooth, quiet operation
- Rapidly separates water
- Wide operating temperature range

Formulated for both extreme low temperatures as well as high temperature applications. Contains Lubium® II anti-oxidant/anti-corrosion package along with other advanced additive chemistry to provide cost efficient extended drain protection from wear, foaming, overheating, deposits, rust, and water contamination.

### 210 Multi-Grade Gear Lube

- 80W140 true multi-grade gear oil
- Allows consolidation—one product, multiple applications
- Improved low temperature performance
- High temperature stability and extreme pressure protection
- Meets all AGMA specifications
- USDA/NSF H2 compliant
- Reduced fuel/energy consumption

Same versatile multi-grade performance as 212 Moly Multi-Grade Gear Lube without the added protection of Molybdenum Disulfide. Exceeds AGMA performance requirements, MIL-PRF-2105E and Mack GO-H.

### 212 Moly XP Multi-Grade Gear Lube

- 75W140 true multi-grade gear oil
- *Syntheon™* synthetic base stock blend insures proper viscosity over a wide temperature range
- Advanced Moly XP additive reduces friction and heat
- Improved low temperature performance
- High temperature stability and extreme pressure protection
- Meets all AGMA specifications
- USDA/NSF H2 compliant
- Reduced fuel/energy consumption

Provides superior anti-friction, anti-wear and boundary lubrication protection of Molybdenum Disulfide. All types of highly loaded gearboxes, stationary and mobile, differentials and axles (including limited-slip). Exceeds AGMA performance requirements, MIL-PRF-2105E and Mack GO-H. Multi-grade lubricant ideal for consolidation; maximizes energy/fuel efficiency. Superior protection against dry starts, can reduce operating temperatures 20-25°F or more.

### 222 Sprayable EP Open Gear Lube

- Superior extreme pressure/anti-wear characteristics
- 100 pound Timken OK load rating
- Translucent to allow easier inspection of gear surfaces
- Extremely adhesive to gear teeth so less clean-up and less waste
- Will not build up in gear teeth

Specifically formulated with high film strength synthetic base stocks and state-of-the-art additive package for highly loaded exposed or shrouded gear sets found in pulverizing and grinding mills, crushers, swing gears on cranes, ring gears on rotary kilns, gearing on draglines and in quarries, foundries and many other operations.



## Engine Oils

### 304 Heavy-Duty Low-Ash Gas Engine Oil

- High performance low-ash oil
- Helps neutralize acids
- Highest quality pure paraffinic base stocks
- Exceeds most OEM requirements

Special low ash formulation for high output natural gas engines used in digester applications, cogeneration plants, land-fill operations. Used in natural gas engines made by Ajax, Dresser-Rand, Ruston, Caterpillar, Jenbacher, Superior, Cooper-Bessemer, MAN, Waukesha and others. A technically advanced, extended service low-ash engine oil keeps engines clean and neutralizes the acids formed during combustion.

### 305/306 Supreme Formula Engine Oil

- High performance friction reducing crankcase oils
- Highest quality pure paraffinic base stocks
- Exclusive DIMONYL® additive package forms anti-friction film
- 305 for single grade performance; 306 for multi-grade performance

Premium quality, extended service engine oils that exceed engine manufacturer's requirements for pre-2007 over-the-road diesels and pre-2010 off-road diesels. Provide outstanding wear control, service life, cleanliness, thermal stability and corrosion resistance. Exceeds Caterpillar ECF-1, Mack EO-N Premium Plus 03, Cummins CES 20078, Allison C-4, Caterpillar TO-2 and most older and other manufacturer specs (depending on weight). Designed for maximum extended drain intervals in the most severe non-EGR diesel and gasoline engine service, with excellent thermal stability and excellent soot dispersion capability. High zinc level provides superior wear protection for flat tappet automotive engines from Ford and other older vehicles.

### 308 Premium Plus Diesel Engine Oil

- A new generation engine oil especially designed for 2007 and later over the road low emission diesel engines
- Syntheon™ synthetic base stock blend insures proper viscosity over a wide temperature range
- Advanced Moly<sup>xp</sup> additive reduces friction and heat
- Exceeds requirements of most OEM oils
- Also exceeds service requirements for automobiles

A premium quality, multi-grade engine oil especially formulated to exceed the performance requirements of new generation 2007 and later low emission over-the-road diesel engines running on ultra low sulfur diesel fuel. Exceeds requirements of Mack EO-O Premium Plus 07, Cummins CES 20081, Volvo VDS-4 and most other diesel engine manufacturer specifications. Backwards compatible to specs for mixed fleets with pre-2007 and off-road diesel engines. Also exceeds requirements of earlier specs for gasoline engines. It is a blend of Syntheon™ and premium paraffinic base oil stocks and advanced additive chemistry designed to exceed the special high temperature, high shear and low volatility requirements of these specifications. High performance TBN booster and state-of-the-art anti-oxidant chemistry extends oil life. DIMONYL®, SWEPCO's powerful anti-friction package, extends engine life in conjunction with SWEPCO's Lab Tec<sup>SM</sup> Fluid Analysis Program.

### 310 Premier Engine Oil

- Meets OEM requirements for 2017 engines
- Available in the popular 10W30 viscosity
- Contains DIMONYL® for added protection

A premium engine oil designed to meet or exceed the requirements for diesel engines requiring 2017 engine oils. A unique blend to meet the requirements of 2017 engines and newer and legacy engines prior to 2017. Contains SWEPCO's proprietary DIMONYL® and Syntheon™ for extra protection and extended drains. Available in SAE 5W30 and 10W30 for 2017 engines, SAE 5W30, 10W30 and 15W40 for older engines.

### 313 TC-W3 Two-Cycle Engine Oil

- Reduces piston deposits, prevents plug fouling and ring sticking
- Unsurpassed lubricity and protection against scuffing and scoring
- Licensed National Marine Manufacturers Assoc (NMMA) TC-W3 oil

All two-cycle gasoline engines burning a gasoline/oil mix, pre-mixed or injected. Licensed by the National Marine Manufacturers Association (NMMA) as a TC-W3 oil. A "quick mix" lubricant which disperses quickly and evenly throughout the fuel. Uniform lubrication and cleaner, more complete burning with less smoke. Ashless, high detergency formula keeps engines free from deposits.

### 314 Small Engine Two Cycle Engine Oil

- Ideal for golf courses, turf and lawn maintenance
- Recommended for both mixing with fuel and use as an injection oil

A new generation heavy-duty two-cycle engine oil specially formulated to exceed the performance demands of today's high horsepower two-cycle air cooled engines. Compatible with regular gasoline and E-10 to E-30 blends. Can be used with Alkylate fuels. Meets JASO FD and ISO L-EDG.

### 333 Elite 100% Synthetic Engine Oil

- Formulated to meet API SP gasoline engine oil specifications
- GM 6094M, Dexos 1 Gen2
- ILSAC GF-6A
- Mil-L-46152D and CID-A-A-52039B
- Ford WSS-M2C945-B1-5W20, Ford WSS-M2C946-B1-5W30, Ford WSS-M2C947-B1-0W20
- Chrysler MS6395M
- JASO-1

A state-of-the-art high-performance engine oil formulated to protect turbocharged and non-turbocharged engines against wear, oxidation, sludge, and high oil consumption. These low viscosity fully synthetic fluids are fortified to protect against valve train, piston ring and crankshaft wear.

### 350 Engine Assembly and Break-In Oil

- Higher Zinc and Phosphorous levels for added protection
- Ideal for pre-lubricating bearings, cams and sliding components
- Can be used in partial or full overhauls

SWEPCO 350 is an engine oil specifically designed for rebuilt engines during the assembly and initial break-in period. A unique blend with higher Zinc and other performance additives for added protection in rebuilt engines. An SAE 10W30 that is ideal for seating rings and bearings during those critical first few miles of a rebuilt engine.

# IMPROVERS

## Oil Improvers

### 502 Premium Engine Oil Improver

- Advanced Moly XP additive reduces friction and heat
- Includes a TBN booster that improves resistance to acidic corrosion
- Helps eliminate sticking and clattering valve lifters
- Protects your engine—reduces heat and wear
- Reduces oil consumption
- Dissolves gums and varnishes

An exceptional crankcase oil conditioner in concentrated liquid form. High-tech additive package protects and preserves your engine like no other engine treatment can. Includes Moly XP to reduce friction and wear, a TBN booster to provide extra protection from corrosive by products of combustion, as well as special solvents for dissolving gum and varnish and eliminating sticking hydraulic valve lifters.

### 512 Premium Performance Booster

- Stops hydraulic oil leaks
- Increases life of conventional hydraulic oils as much as 50%
- Improves water separation
- Reduces pump wear
- Lowers operating temperatures
- Stops blown hoses



An advanced additive package for new conventional hydraulic oils especially formulated to boost performance, stop leaks, extend oil life by as much as 50% and provide better water

handling. Advanced additive technology also reduces pump wear, lowers operating temperatures and stops blown hoses.

## Fuel Improvers

### 501 Premium Diesel Fuel Improver

- Boosts cetane number of diesel fuel; improves combustion
- Keeps injector systems clean, increases power, reduces emission levels
- Provides lubricity, prolongs injector & injector pump life
- Improves diesel fuel stability in storage
- Inhibits corrosion and rust
- Improves cold temperature performance

A superior diesel fuel improver with powerful cetane booster. Improves combustion characteristics of fuel. Fights sludging, oxidation, corrosion and the abrasive effects of low sulfur fuel. Increases power & cold weather performance. Reduces emissions, knock & fuel consumption. Prolongs injector and injector pump life and reduces maintenance costs. Also available in a winter formula which provides added protection against diesel fuel gelling in freezing climates.



### 503 Premium Gasoline Improver

- Keeps fuel injectors clean
- Improves engine performance
- Protects from rust and corrosion
- Eliminates carbon deposits on intake and exhaust valves
- Lubricates upper cylinders
- Economical to use

Use for treatment of gasoline. Prevents injector clogging and power-robbing carbon deposits. Safe for catalytic converters. A highly effective fuel improver which eliminates carbon deposits on intake and exhaust valves. Protects expensive fuel injectors and pumps from the detrimental effects of "dirty gas". Provides upper cylinder lubrication.



## Transmission/Tractor Fluids

### 709 Universal Tractor Transmission/Hydraulic Oil

- Designed for use in all major tractor brands
- For hydraulics, transmissions, PTO units, final drives, wet brakes
- Highest quality pure paraffinic base stocks
- Advanced additive chemistry
- Excellent high temperature stability



For use in most major tractor brands, such as John Deere, Massey-Ferguson, Case/IH, White Farm, Ford New Holland, Allis Chalmers and others. Superior performance in hydraulic systems, transmissions, PTO units, final drive units and wet brake systems. A universal tractor hydraulic oil which simplifies lubricant inventories and main-

tenance procedures. Eliminates need to stock several different lubricants

### 710 Maximum Performance Synthetic ATF

- Meets Dexron VI requirements
- Ideal for 2006 and newer vehicles
- Improves performance in older vehicles
- Contains Syntheon™ for extended drains

A premium automatic transmission fluid for vehicles requiring Dexron VI fluids. SWEPCO 710 meets or exceeds Dexron VI requirements and will provide superior performance in newer vehicles as well as older vehicles that require Dexron III and older fluids. Contains Syntheon™ for extended drains, reduced fluid drag and superior performance.

### 711 Premium Synthetic Multi-Service Manual Transmission Fluid

- Meets Eaton PS-386 specifications
- Meets Mack TO-A+ specifications
- Meets International TMS-6816
- Meets ZF Freedom Line

A fully synthetic SAE 50WT manual transmission fluid for use in mild EP applications. Specifically designed for long drain equipment when used with LOA. Can be used in on-road and off-road equipment requiring a synthetic SAE 50WT fluid.

### 712 Premium Synthetic Multi-Service ATF

- For latest generation of high efficiency planetary transmissions requiring Allison® TES-295, TES-468, C-4, Dexron® IIIH, Mercon®, Mercon V®, Jaso 1A or similar fluids
- Syntheon™ synthetic base stock blend insures proper viscosity over a wide temperature range
- For standard or severe service in over-the-road applications
- Excellent shear stability, oxidation resistance, friction stability & wear control in extended service
- Extends drain intervals beyond conventional oils

A high performance, extended drain ATF for heavy duty over-the-road powershift and other transmissions requiring Allison® TES-295, TES-468, C4, Dexron® IIIH, Mercon®,



Mercon® V, Jaso 1A or similar fluids. Insures smooth, positive shift quality, faster warm-ups and freedom from problems caused by varnish and sludge.

### 714 Heavy Duty TO-4/C-4 Transmission Fluid

- Exceeds CAT TO-4 and Allison C-4 specifications
- Highest quality pure paraffinic base stocks
- Reduces friction and wear
- Excellent high temperature stability



TO-4/C-4 transmission/drive train fluid applications that call for CAT's TO-4 or Allison's C-4 fluid. Also recommended for certain U.S. and import automotive/light truck transmission applications, hydraulic fluid for hydro-

static transmissions, hydraulic and power steering systems found on contractor, marine and industrial systems. Exceeds Caterpillar TO-4, Allison C-4, and other transmission/drive train fluid manufacturers specifications. A new generation, extended service, multipurpose transmission/drive train fluid that provides correct frictional characteristics for smooth, positive shift quality. Superior high temperature oxidation and thermal stability prevents sludge, varnish and carbon deposits.

## Compressor Oils

### 702 Synthetic Universal AW Compressor Oil

- Specially designed for rotary screw/vane type compressors and reciprocating compressors
- Syntheon™ synthetic base stock blend insures proper viscosity over a wide temperature range
- Service up to 8,000 hours or more
- Lower operating temperatures, reduces energy costs
- USDA/NSFH2 compliant

Specifically designed for all reciprocating, rotary screw and rotary vane compressors, including those operating in extreme low or high ambient temperatures. A premium quality, extended service compressor oil, specifically designed to combat friction and wear resulting from oxidation, water, contaminants and heavy loads.

### 750 Premium Food Grade Compressor Oil

- USDA/NSFH1 compliant (incidental food contact)
- Formulated for rotary screw, rotary vane & reciprocating compressors
- Unsurpassed oxidation resistance insures extended service
- Superior anti-wear/EP performance

Unsurpassed H1 performance for heavily loaded, constant duty compressors in food and beverage manufacturing facilities where chance of incidental food contact exists. Insures reliable plant air supply. Reduces downtime and equipment failure. Saves money through energy conservation, reduced maintenance and extension of equipment and oil life.



# HYDRAULIC OILS

## Hydraulic Oils

### 703 Synthetic Multi-Grade AW Hydraulic Oil

- **Syntheon™ synthetic base stock blend insures proper viscosity over a wide temperature range**
- **Superior oxidation & high temperature resistance**
- **Proven to boost productivity as much as 30% by controlling shear and high temperature thinning**
- **Eliminates seasonal oil changes**
- **Advanced additive chemistry**
- **Excellent high temperature stability**
- **USDA/NSF H2 compliant**



A superior all-temperature, anti-wear multigrade hydraulic oil. Improves productivity by as much as 30% by reducing shear and "afternoon fade". Exceeds requirements of major hydraulic system manufacturers. Can be used through-

out the entire temperature range eliminating the need for "seasonal" change-overs. An economical, "single inventory" multigrade hydraulic oil with outstanding foam dispersion to prevent surging and "blown" lines. Exceptional water demulsification.

### 704 Synthetic AW Hydraulic Oil

- **Syntheon™ synthetic base stock blend insures proper viscosity over a wide temperature range**
- **Service up to 8,000 hours or more**
- **Reduces operating temperatures/varnish deposits**
- **Outstanding anti-foam performance**
- **Superior water demulsification**
- **USDA/NSF H2 compliant**

An anti-wear hydraulic fluid designed to provide long lasting protection in all types of hydraulic systems. High-tech additive package provides excellent resistance to emulsification to quickly separate from water and prevent system corrosion. Superior anti-foaming performance means smoother, more even power transmission without the surging that can cause "blown lines" and leakage. A proven performer, even in critical systems demanding precise motion control, such as flight simulator use.

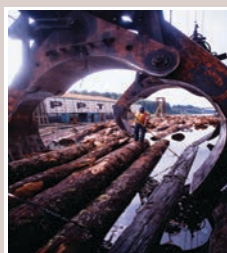
### 708 Premium R&O Industrial/Turbine Oil with Syntheon™

- **Advanced R&O additive chemistry**
- **Reduces friction and wear**
- **Excellent high temperature stability**
- **USDA/NSF H2 compliant**

A premium quality, extended service industrial oil designed to give clean, efficient performance in all types of equipment including vacuum pumps, industrial turbines, gear reducers, blowers, air line oilers, oil cups and many others. Specifically designed to combat friction and wear resulting from high temperature oxidation, water, contaminants and heavy loads. Reduces electrical consumption and utility costs.

### 737 EcoPro HD Anti-Wear Hydraulic Oil

- **Unsurpassed biodegradability ... non-toxic**
- **Outstanding oxidative and thermal stability provides service to +280°F**
- **Superior protection from foam, rust and corrosion**
- **Won't produce "rainbow sheen"**



A high performance non-toxic, biodegradable hydraulic fluid for use in ecologically sensitive environments. Delivers performance superior to conventional biodegradable and many petroleum-based fluids in areas such as service life, high temperature resistance, lubricity, low temperature fluidity and wear control.

### 755 Premium Food Grade Hydraulic Oil

- **USDA/NSF H1 compliant (incidental food contact)**
- **Formulated for constant duty hydraulic systems**
- **Unsurpassed oxidation resistance insures extended service**
- **Superior anti-wear/EP performance**

A premium quality H1 compliant multipurpose hydraulic oil especially formulated for use where chance of incidental food contact exists. A synthesized hydrocarbon base and advanced additive package insure unsurpassed H1 performance for heavily loaded, constant duty hydraulic systems in food and beverage manufacturing. Extended fluid life. Unsurpassed wear control. Reduces downtime and equipment failure. Saves money through energy conservation, reduction of waste, reduced maintenance costs and extension of equipment and oil life.

## Other Special Purpose Oils

### 715 APR Power Steering/Hydraulic Oil

- **Reduces friction, wear and pump "squeal"**
- **Anti-wear all season formula**
- **Prevents leakage and increases hydraulic hose life**
- **Highest quality pure paraffinic base stocks**
- **Advanced additive chemistry**

For power steering and hydraulic systems on U.S. and imported autos except Honda (recommends only Honda fluids). Reduces power steering pump "squeal" & surging.

### 770 Fire Resistant Hydraulic Fluid

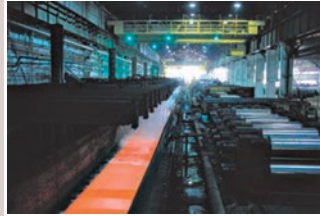
- **Unique Ester Blend, no water to contend with**
- **Compatible with most seals and hoses.**
- **Wide operating temperature range**
- **>90% biodegradable in 10 days.**
- **Operating pressures up to 20,000 psi**

This is a specialty Fire Resistant Hydraulic Fluid that does not contain water or any toxic materials. Works in systems up to 572°F (300°C). Provides excellent wear and corrosion resistance properties.

## 722 HiTemp Chain & Roller Lubricant

- Especially formulated for high temperature chain & roller applications
- Exceptional thermal stability reduces lubricant usage and clean-up
- USDA/NSF H1 biodegradable compliant

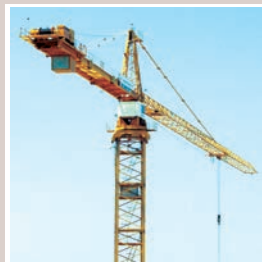
Especially formulated for lubrication of chains, cables and conveyors used in high temperature process ovens and other high temperature applications. Prolongs life of chains, rollers, bearings, pins, cams, gears and slide-ways in baking, annealing, curing and drying processes. Provides superior lubrication without carbon, varnish, sludge, smoke or objectionable odors.



## 723 HVG Anti-Wear Wire Rope Lubricant

- Exceptional EP performance (800 kg weld load)
- Tough, non-drying coating bonds tenaciously to protect from abrasive wear
- Doesn't build-up or harden like asphalt based products
- Translucent color permits easier inspection of wire ropes

A high viscosity synthetic lubricant with state-of-the-art overbased calcium sulfonate chemistry that provides superior resistance to wear, rust and corrosion in a wide range of heavily loaded wire rope applications.



## 724 Ultra AW Wire Rope Lubricant

- Includes diluent for improved cold weather sprayability
- Exceptional EP performance (800 kg weld load)
- Tough, non-drying coating bonds tenaciously to protect from abrasive wear
- Doesn't build-up or harden like asphalt based products
- Translucent color permits easier inspection of wire ropes



Identical to SWEPCO 723 but with improved sprayability in colder temperatures.

## 728 In-Service System Cleaner

- Simple, safe, aggressive system cleaning
- Use just prior to oil change
- Use in hydraulic systems, rotary screw and reciprocating compressors, industrial gear boxes, differentials, final drives and engines

Concentrated. Formulated with aggressive detergents and dispersants that remove varnish, sludge, gum, soot, carbon, lacquer and other harmful deposits. Add directly to the oil system and run for a short cleaning period immediately prior to a drain.



## 729 Premium Flushing Fluid

- Helps insure optimum performance from SWEPCO Lubricants
- Simple, safe, aggressive system cleaning
- Recommended for flushing compressors, transmissions, hydraulic systems, gear boxes, differentials, final drives and engines



A light flushing oil light mineral oil especially formulated for purging oil systems before switching to a SWEPCO High Performance Lubricant.

## 757 Premium Food Grade Gear & Bearing Oil

- USDA/NSF H1 compliant (incidental food contact)
- Unsurpassed oxidation resistance insures extended service
- Superior anti-wear/EP performance

A premium quality H1 compliant multi-purpose gear and bearing oil especially formulated for use where chance of incidental food contact exists. A synthesized hydrocarbon base and advanced additive



package insure unsurpassed H1 performance for heavily loaded, constant duty gear boxes, gear reducers and other power train and oiled bearing components in food and beverage manufacturing facilities. Extends drain intervals. Reduces downtime and equipment failure. Saves money through energy conservation, reduction of waste, reduced maintenance costs and extension of equipment and oil life.

## Industrial Spray Lubricants

### 801 Clear Penetrating Lubricant

- Loosens frozen/corroded parts fast with less wait time
- Penetrates, loosens and dissolves rust, corrosion, paint, dirt, dope, grease
- Helps protect against future rust and corrosion
- Clear formula means easy clean-up

A fast acting, clear penetrating oil and lubricant. Frees up frozen parts fast and lubricates too. Easy clean-up.

### 802 Open Gear Lube

- Helps prolong gear life and helps reduce noise
- Puts an end to dry gear starts
- Contains special extreme pressure additives

Open gear applications such as on shovels, draglines, gears, asphalt rollers, winches, cables and cams. Does as much lubricating as ten pounds of ordinary bulk grease. An all-temperature open gear lube which also has a high melting point. Clean to apply, will not fling or drip off like heavier greases.



### 803 Chain & Cable Lube

- Contains graphite
- Penetrates deep to eliminate internal wear
- Won't drip or run

For roller chains and wire rope used in all types of industrial, commercial, mining, farming and construction applications. A deep penetrating chain and cable lubricant that prolongs service. Also available in non-aerosol packaging.

### 808 Penetrating Oil

- Cuts rust, paint, dirt, grease and corrosion fast
- Penetrates deep and fast

For freeing frozen or rusted nuts, bolts and other parts which require a penetrating lubricant. A penetrating lubricant containing Molybdenum Disulfide. Works fast, with a deep penetrating solvent. Also available in non-aerosol packaging.

### 812 Moly Dry Lube

- Formulated with Molybdenum Disulfide
- Carrier evaporates immediately, leaving "dry" lubrication
- Withstands higher temperatures than most other "dry" lubricants

For chain and sprockets, rollers and conveyors, lathe bed and rails, door locks and hinges; anywhere a dry lubricant is required. A specially formulated, Molybdenum Disulfide spray. Carrier agent evaporates almost instantly, leaving the dry lubricant behind.

### 815 Food Machinery Grease

- USDA/NSF compliant (incidental contact)
- Resists washout, pounding out & slinging out
- Outstanding high temperature, acid & corrosion resistance

A premium quality food grade lubricant that provides outstanding performance in high speed, hard working food and beverage equipment. Resists pounding out, has superior resistance to water washout in washdown areas, is highly acid resistant and has excellent high temperature performance.

### 816 Food Grade Silicone Spray

- USDA/NSF compliant (incidental contact)
- Makes it more difficult for foods and glues to buildup and cause clogging and jams
- Keeps packaging lines moving by making cellophane and other packaging materials slide more easily
- Makes clean-up faster and easier
- Protects machine parts and surfaces from rust, acids, corrosion

USDA/NSF H1 compliant. Convenient surface spray for protecting machinery surfaces. Helps improve packaging productivity and make daily cleaning easier.

### 818 Food Grade Penetrating Lubricant

- USDA/NSF compliant (incidental contact)
- Penetrates rust, corrosion, residues
- Loosens frozen/corroded parts fast
- Works as a protective lubricant too
- Special food grade anti-wear chemistry prolongs part life
- Perfect for screws, nuts, bolts, rollers, slideways, meat hooks, knives, cams, chains and other parts

USDA/NSF H1 compliant. Loosens stubborn screws, bolts. Penetrates corrosion. Protects against future corrosion.

## Specialty Products

### Pro-Scrub Hand Cleaner

- Available in several sizes
- Can be used with or without water
- Tough on dirt, gentle on hands

A premium hand cleaner that can be used with or without water. Removes dirt and grime without excessive scrubbing or abrasion and gentle on the skin. Pro-Scrub has a pleasant fragrance and is ideal for clean-up on locations where water is not available for washing. Available in a compound or a liquid.

### Zonex-K Industrial Cleaner

- Excellent multi-purpose cleaner
- High dilution rate so it is economical to use
- A superior degreaser when mixed with kerosene or mineral spirits
- Gentle on skin

A multi-purpose cleaner that can be used for a variety of applications. Use one ounce per gallon for most applications. Surpasses U.S. Federal Specification PD220D, Type II. It is USDA/NSF A4 and Health Canada compliant. Removes dirt, grime, waxes and oily build up.

## Specialty Services

### LabTec<sup>SM</sup> Fluid and Grease Analysis Program

SWEPCO's LabTec<sup>SM</sup> Fluid and Grease Analysis Program is designed to allow SWEPCO Customers to enjoy the important benefits of a complete predictive/proactive maintenance program. Customers submit used oil samples at predetermined intervals for analysis by highly qualified technicians. Comprehensive reports document fluid cleanliness and wear particle trends and can provide early warning of equipment failure.



Using state-of-the-art analytical equipment, SWEPCO's LabTec<sup>SM</sup> Program monitors the presence of 13 metallic elements, while red flagging destructive impurities and contaminants.

SWEPCO Customers who use this program in combination with SWEPCO Lubricants are also able to extend their drain intervals as much as 2, 3, 4, 5 times or longer.

This program is used in conjunction with the SWEPCO High Performance Lubricant Extended Service Warranty.

### Cost Improvement Analysis

- Reveal the total real world cost of your lubrication program
- Consolidate all information in one simple report
- Identify opportunities to reduce cost & improve profit

The initial cost of a lubricant has very little impact on the total cost of lubrication. But your choice of lubricants can have a dramatic impact.

SWEPCO's Lubrication Cost Improvement Analysis provides a simple cost analysis of all lubrication related expense. By answering a few basic questions about current lubrication and repair practices, maintenance managers can receive a report which reveals the true impact of their choice of lubricants.

The report will also reveal opportunities for reduction of costs and improvement in profits.

The SWEPCO Cost Improvement Analysis is free and can be used to evaluate any of the following applications:

- Greased Bearings
- Mobile & Stationary Gear Boxes
- Mobile & Stationary Engines
- Compressors
- Hydraulic Systems



**NOTE:** Contact your local SWEPCO Field Service Representative for specific application recommendations and additional information on availability in your area, container sizes, weights and pricing.

# RELIABILITY

## Service Interval Optimization

Technologically advanced lubricants last longer. Choosing the best lubricant for the job can significantly influence the length of time between servicing and reduce maintenance downtime.

## Laboratory Oil Analysis Programs

Besides reducing lubricant consumption, carefully scheduled third party used oil analysis can forewarn of impending equipment failures, giving managers the time needed to make good business decisions.



## Enhancing Reliability of Critical Equipment

Special lubrication programs for mission critical equipment can improve reliability and eliminate downtime.

## Prolonged Hard Part Life

High performance lubricants provide a greater degree of protection which means longer time between routine parts replacement and rebuilds.

## Longer Equipment Life

Insuring the projected life of equipment is important. Prolonging equipment life beyond projection is the stuff heroes are made of. SWEPCO Lubricants can help you do both.



*... unsurpassed  
quality since 1933.*

## Reducing Energy Consumption

Whether it's the electric fuel used to run large industrial motors or diesel fuel for over the road fleets, SWEPCO's Energy Star® Partner program can help you reduce your energy consumption.

## Lubricant Inventory Consolidation/Simplification

A SWEPCO Lubricant Audit and SWEPCO Multi-Purpose Lubricants can help reduce lubricant inventories, control costs and simplify lubrication schedules.



## Controlling Waste Oil Disposal

Reduce lubricant consumption and you decrease the costs of used lubricant disposal.

## Specialized Support Services

From meeting "just in time" delivery requirements . . . to on-site or laboratory evaluation of troublesome applications . . . to training of maintenance staffs . . . Southwestern can provide uncommon levels of Customer Service and Technical Support that is sharply focused on improving business profits.

## Custom Formulations

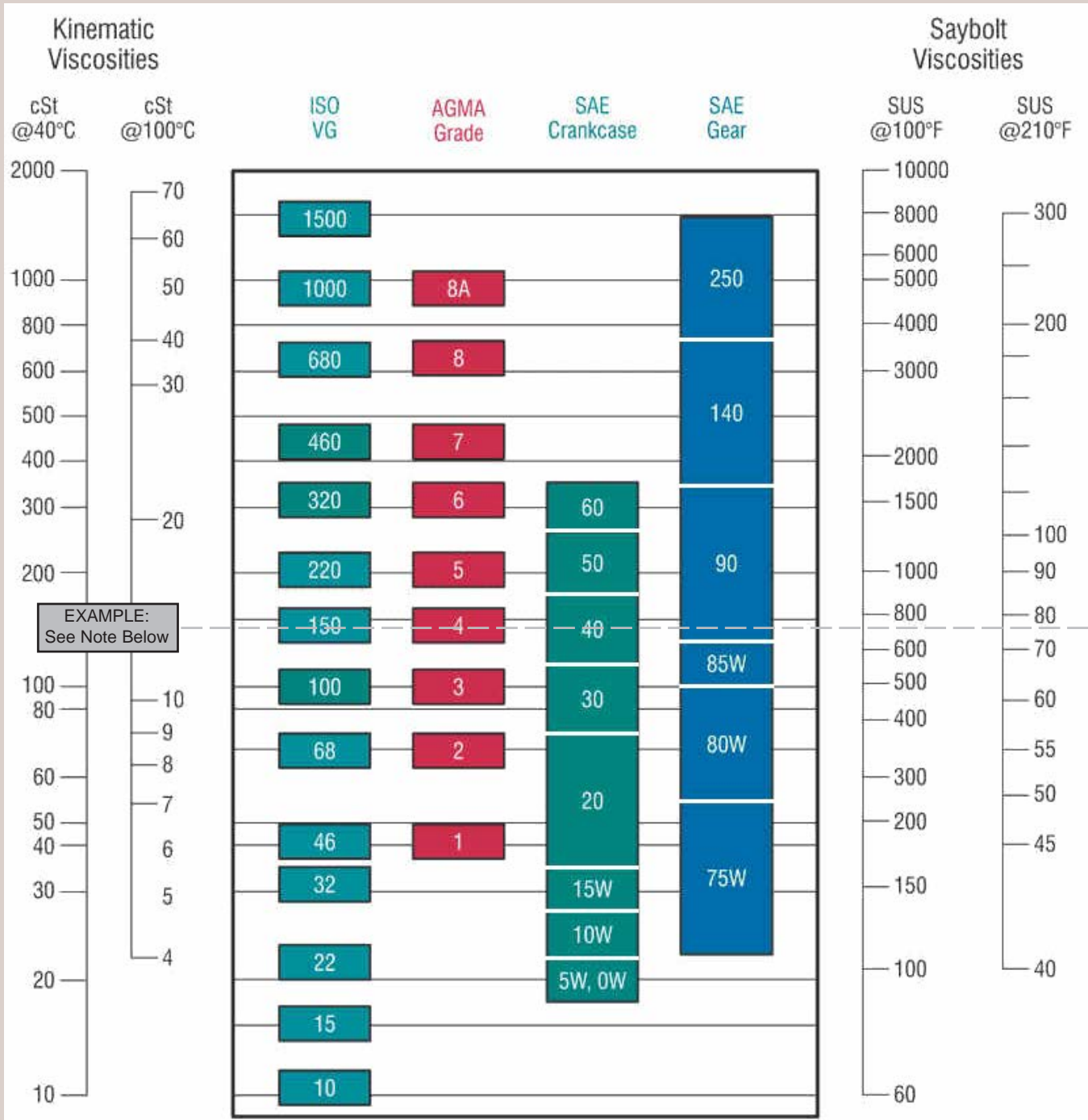
As a leader in high performance lubricants, Southwestern can help you assess special needs and custom formulate the best lubricant for the job.

## ISO Certified Quality Assurance

When you specify Southwestern Petroleum, you are specifying an ISO 9001 certified manufacturer. That assures you of consistent quality today and tomorrow.



# VISCOSITY EQUIVALENTS CHART



NOTE: To determine equivalents, simply draw a horizontal line straight across the page which intersects your known viscosity. All other columns that intersect the line represent equivalents. Example: An SAE 40 weight engine oil falls within the range of an ISO 150, the low end of an SAE 90 gear oil and an AGMA 4. On the left of the chart you can see it has Kinematic viscosities of roughly 145 cSt at 40°C and 14 cSt at 100°C and, on the right side of the chart, Saybolt viscosities of 700 SUS at 100°F and 75 SUS at 210°F. SAE stands for Society of Automotive Engineers. ISO stands for the International Organization for Standardization. AGMA stands for the American Gear Manufacturers Association.

# QUALITY

... the world's most  
technologically advanced  
lubricants.

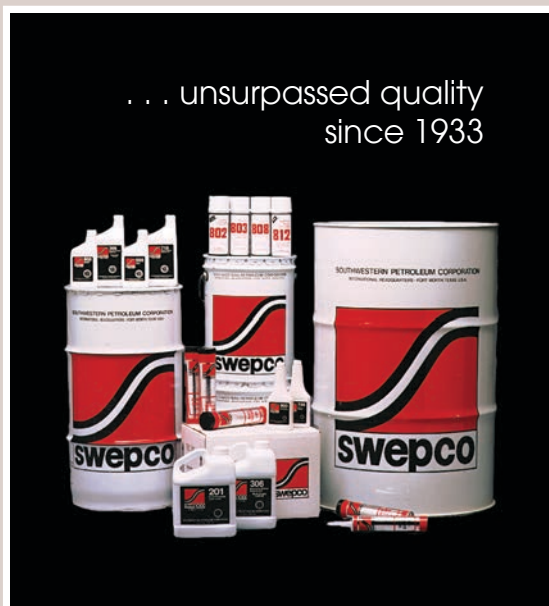
Everybody talks quality. But oil is NOT oil. And all greases are NOT created equal. There is a *difference* and that difference manifests itself throughout your entire operation ... from uptime and productivity, to reliability, to capital asset preservation, to competitiveness, to cost control and profitability. Nothing says quality like performance and nothing proves performance like the real world experience of SWEPCO Customers.

The source of SWEPCO Quality is ingredients ... from the very finest raw materials like high VI solvent refined base stocks and specialty fluids like Syntheon™, that don't thicken excessively at low temperatures or thin out at high temperatures ... to proprietary synergistic additive chemistry like

*LUBIUM*® and *DIMONYL*® ... to the purest grade of "technical fine" Molybdenum Disulfide ... to exclusive services like SWEPCO's *LabTec*™ *Fluid Analysis Program*, *Cost Improvement Analysis* and *Energy Star*® *Partner Program* that help you project and document the cost saving impact of SWEPCO Lubricants on your operation. We produce the world's most technologically ad-

vanced lubricants ... lubricants that yield **ultimate protection** for our Customers. SWEPCO Products are specifically designed to lower your *total* cost of lubrication by extending lubrication cycles, reducing lubricant consumption, cutting energy costs, reducing both scheduled and unscheduled maintenance downtime, reducing

lubrication labor, prolonging equipment life, reducing waste oil disposal costs and reducing parts replacement costs. Let your SWEPCO Field Service Representative show you SWEPCO ... *to keep it running*®.





**Products of SPX Technology<sup>SM</sup>.**

... the cutting edge performance SWEPCO  
Customers have come to expect since 1933



**Southwestern Petroleum Lubricants, LLC**

Fort Worth, Texas • Phone: (800)359-5823 or (817)332-2336 • Fax: (800)736-5823 • Web: [www.swepcolube.com](http://www.swepcolube.com)